

ARDE Focus Group 2

Assuring Quality in Supervision

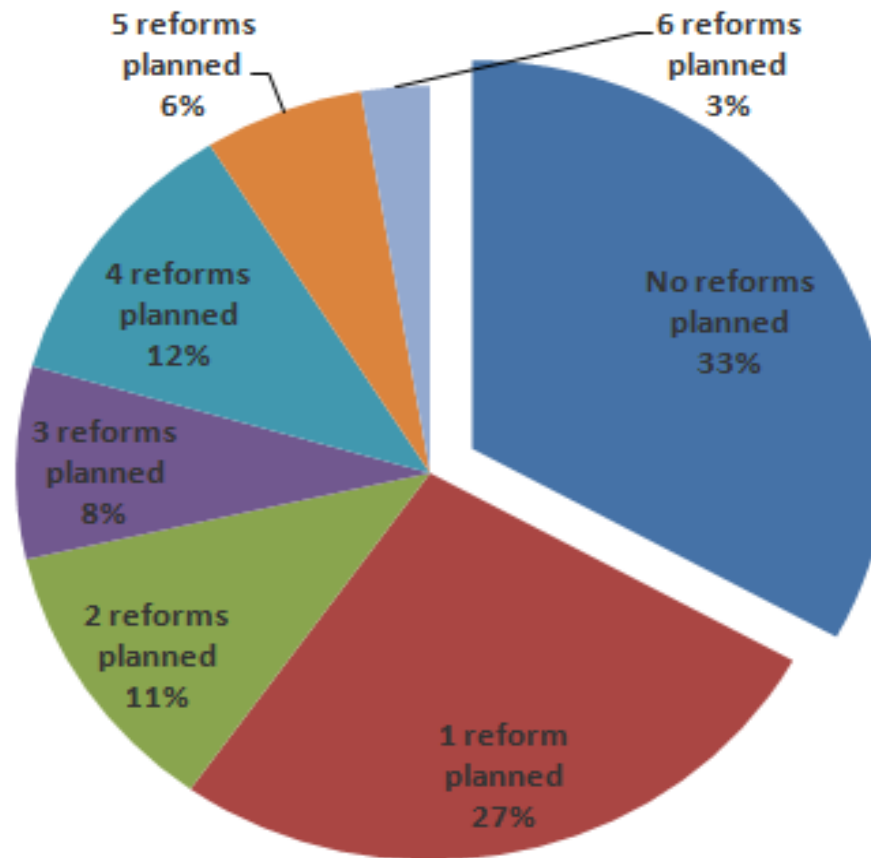
24 November 2011

Irish Universities Association, Dublin

Preliminary survey results

- 112 respondents
 - Mostly large, research-intensive institutions
 - ~ 100,000 doctoral candidates
- Questions about QA framework for doctoral education as well as specific procedures:
 - Admissions, registration, monitoring of progress, supervision, involvement of doctoral candidates in governance, thesis evaluation
- Generally **structures are in place in universities**

Reforms are ongoing



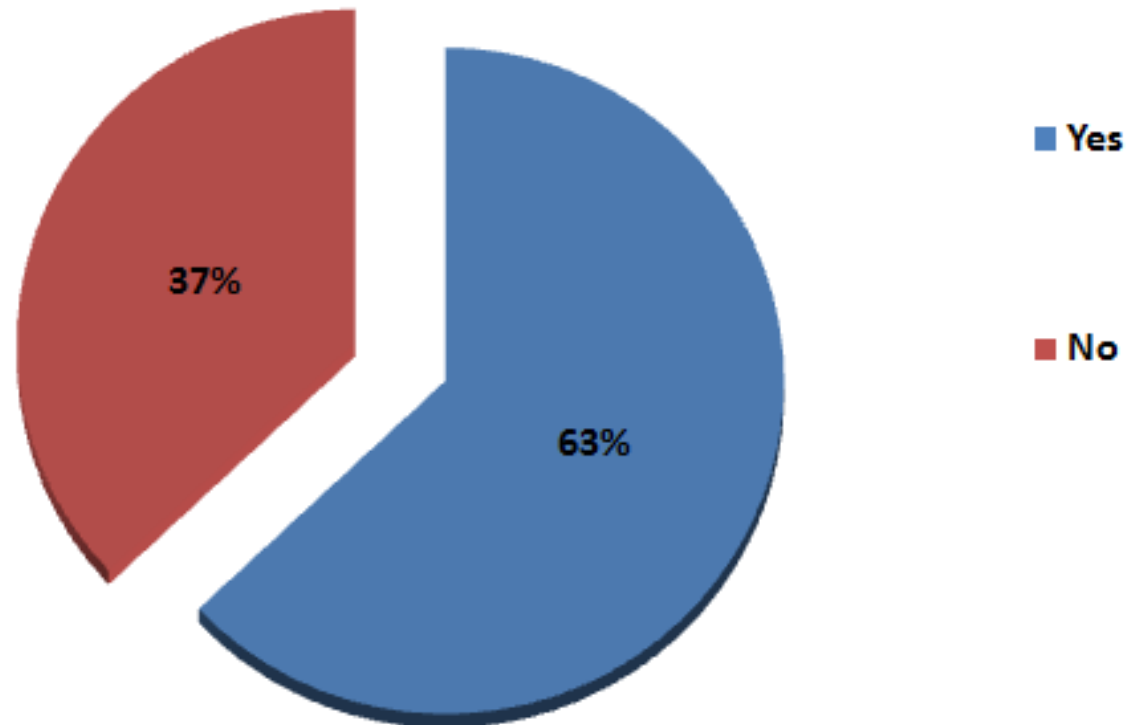
...3...

Source: ARDE Survey (N=112),
questions about six distinct reforms

Supervision

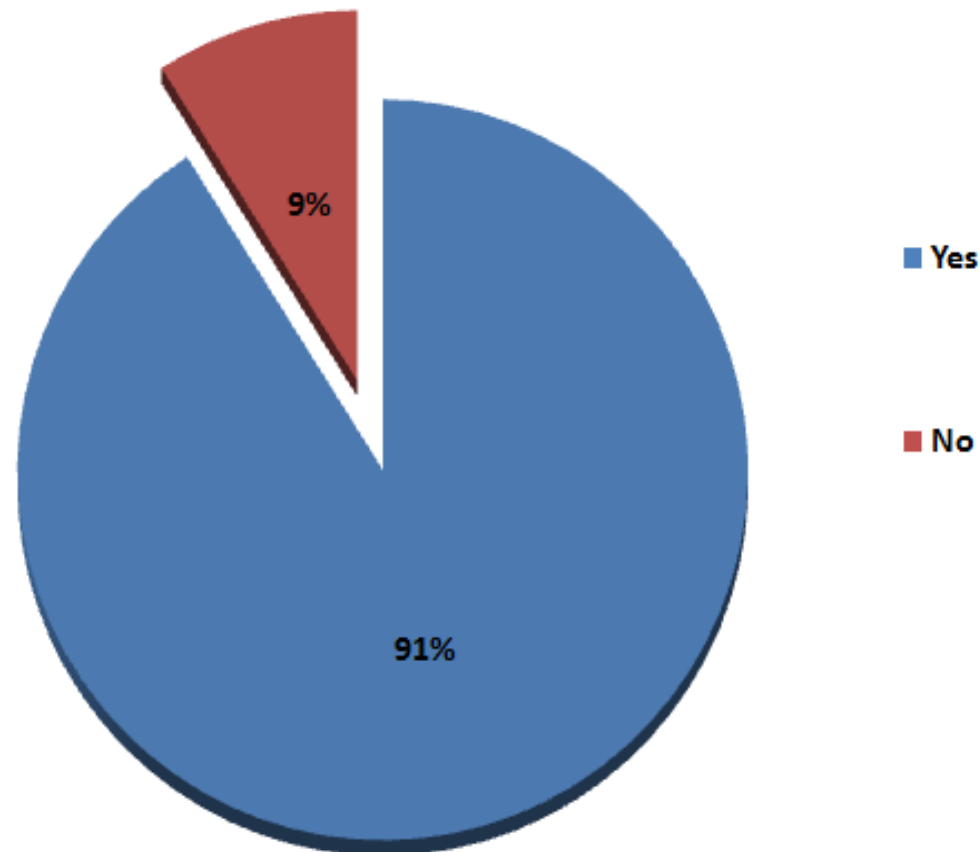
- The area where most respondents indicated dissatisfaction with the current policies and procedures in place in their institution

Do you find your institutional policies and procedures relating to supervision of doctoral candidates to be adequate?

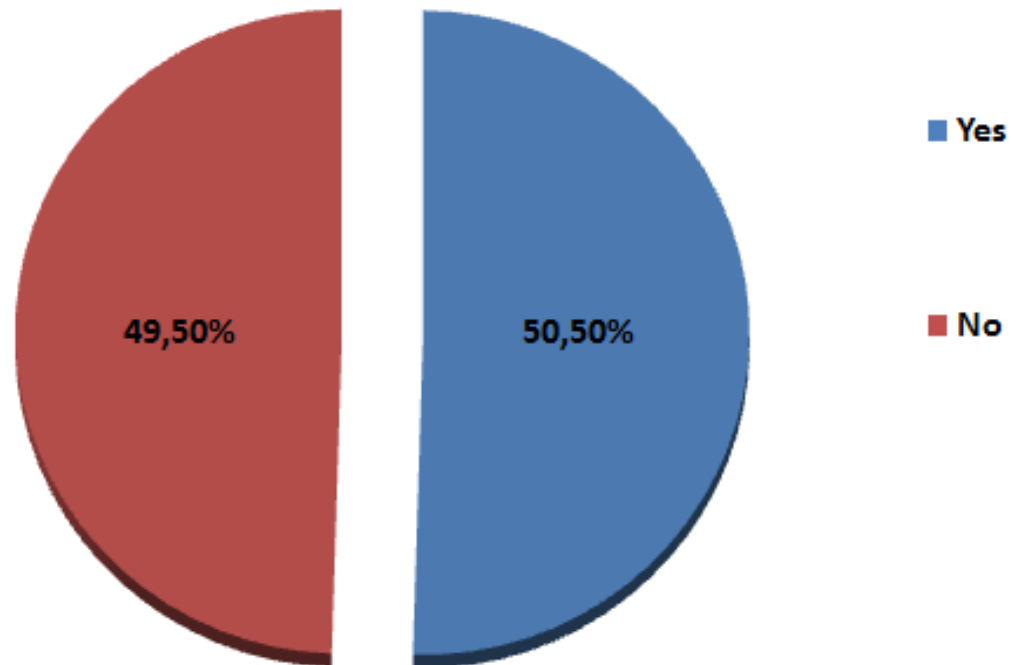


(N=111)

Is it within your institution's power to change the procedures in place for the supervision of doctoral candidates?

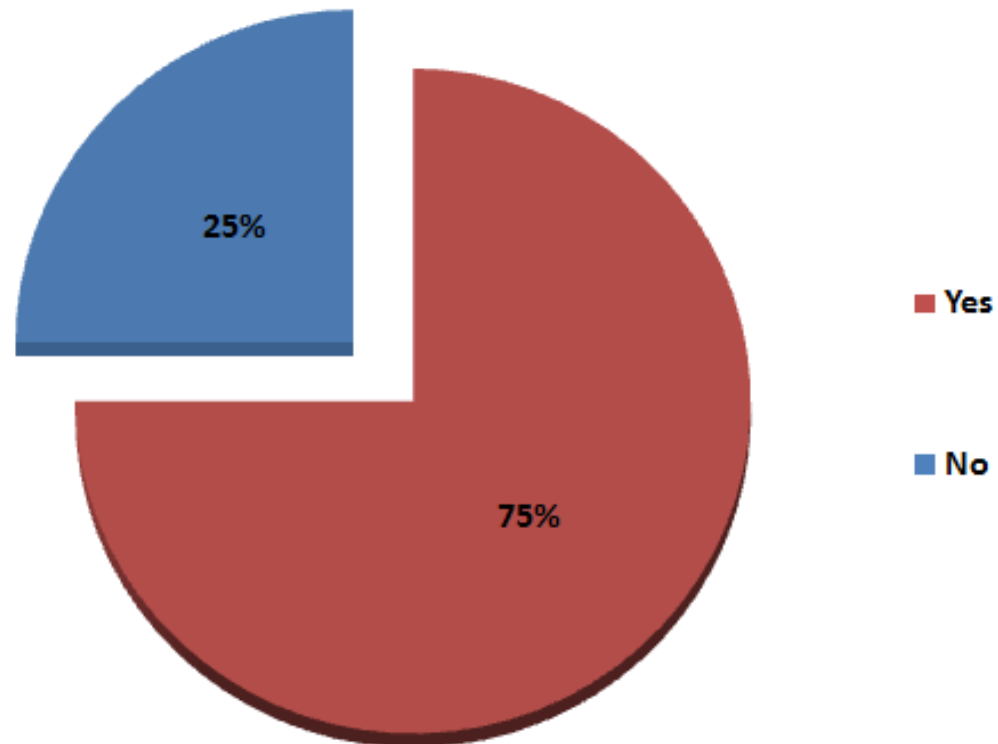


Does your institution have concrete plans to change the procedures in place relating to the supervision of doctoral candidates?



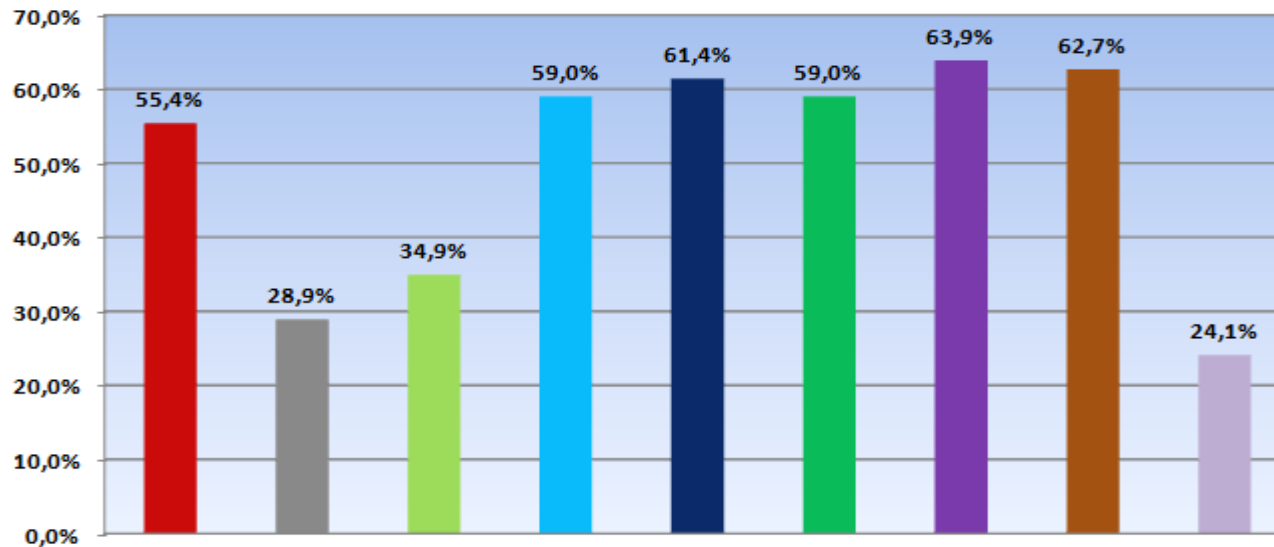
(N=101)

**Do you have written regulations and/or guidelines
for PhD supervision?**



(N=112)

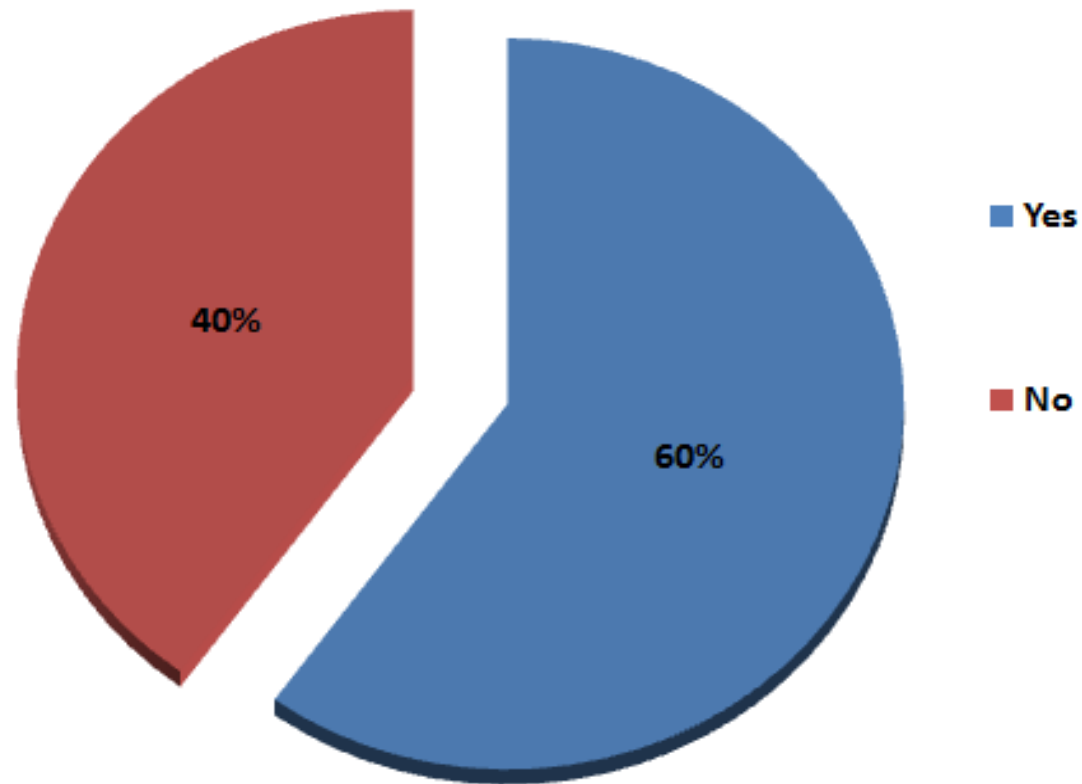
Do your institution's written regulations and/or guidelines include the following?



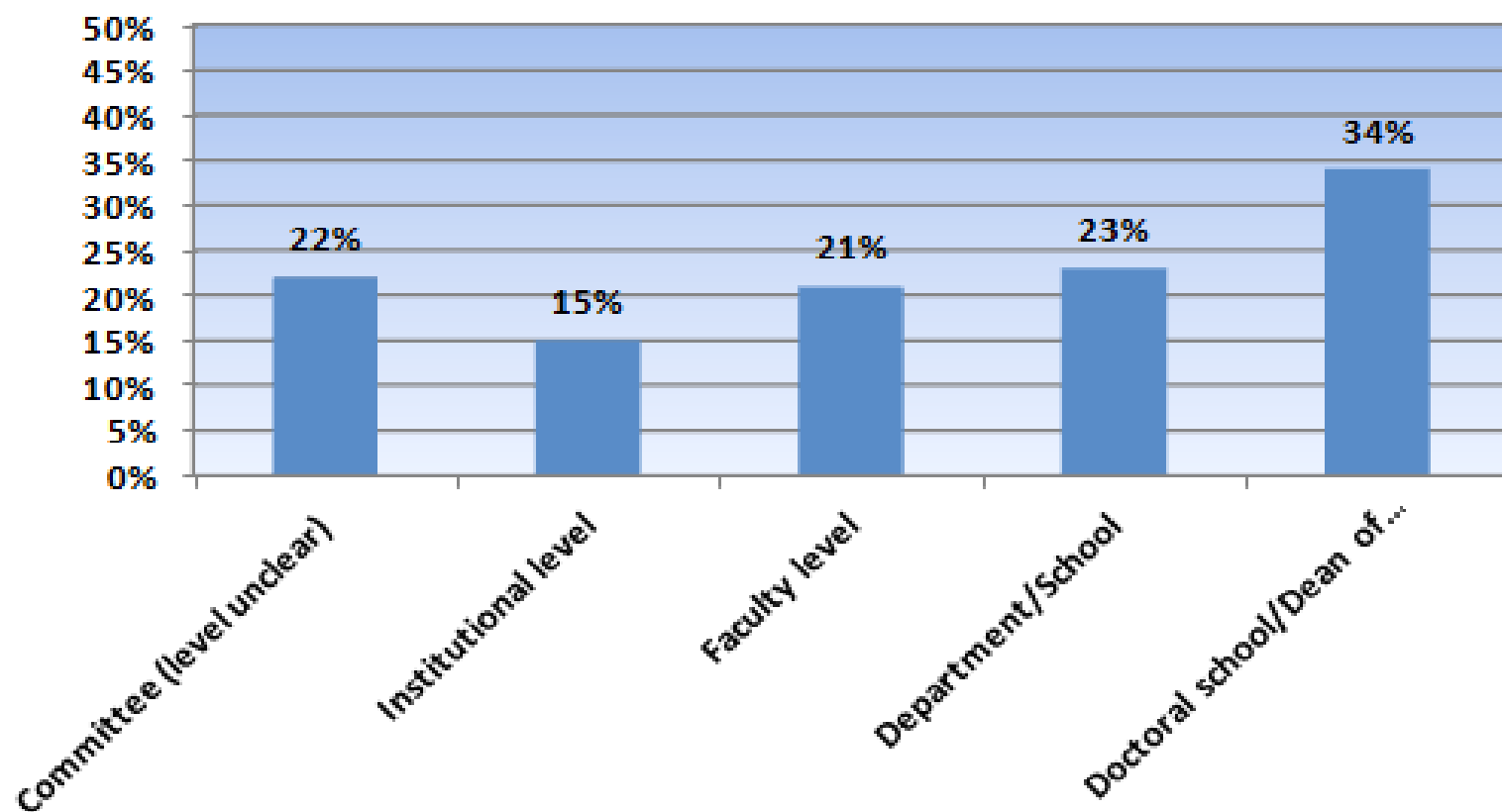
- **Maximum number of doctoral candidates per supervisor**
- **Obligatory training for supervisors**
- **Voluntary training for supervisors**
- **Requirement or recommendation for minimum number of meetings with supervisor**
- **Requirement or recommendation for supervisory teams**
- **Written agreements between supervisors, supervisees and/or institution**
- **Procedures for dealing with supervisor-supervisee conflicts**
- **Systematic feedback collected from doctoral candidates**
- **Other**

(N=83)

Is supervision of doctoral candidates systematically monitored in your institution?

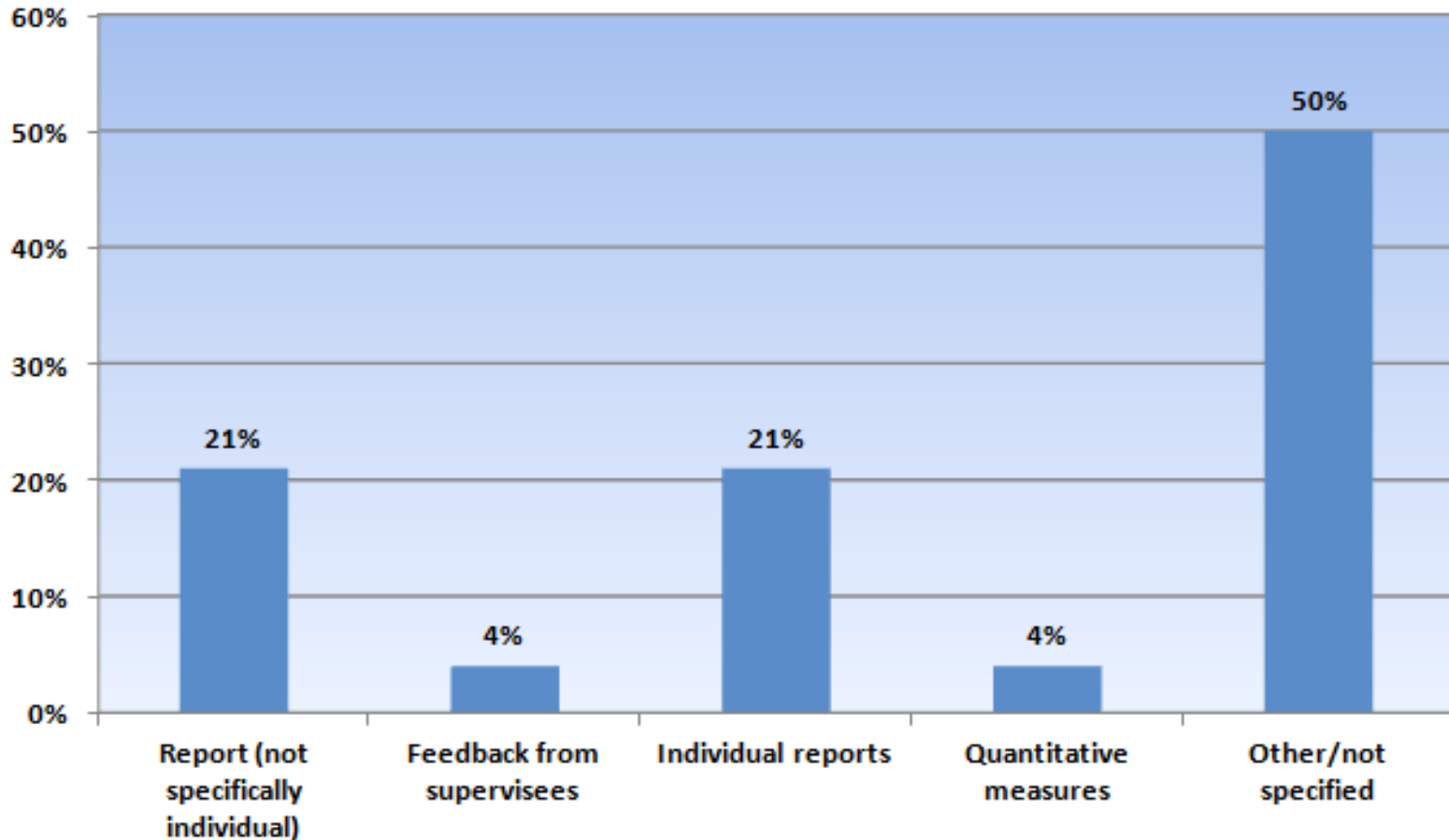


Who systematically monitors the supervision of doctoral candidates in your institution?



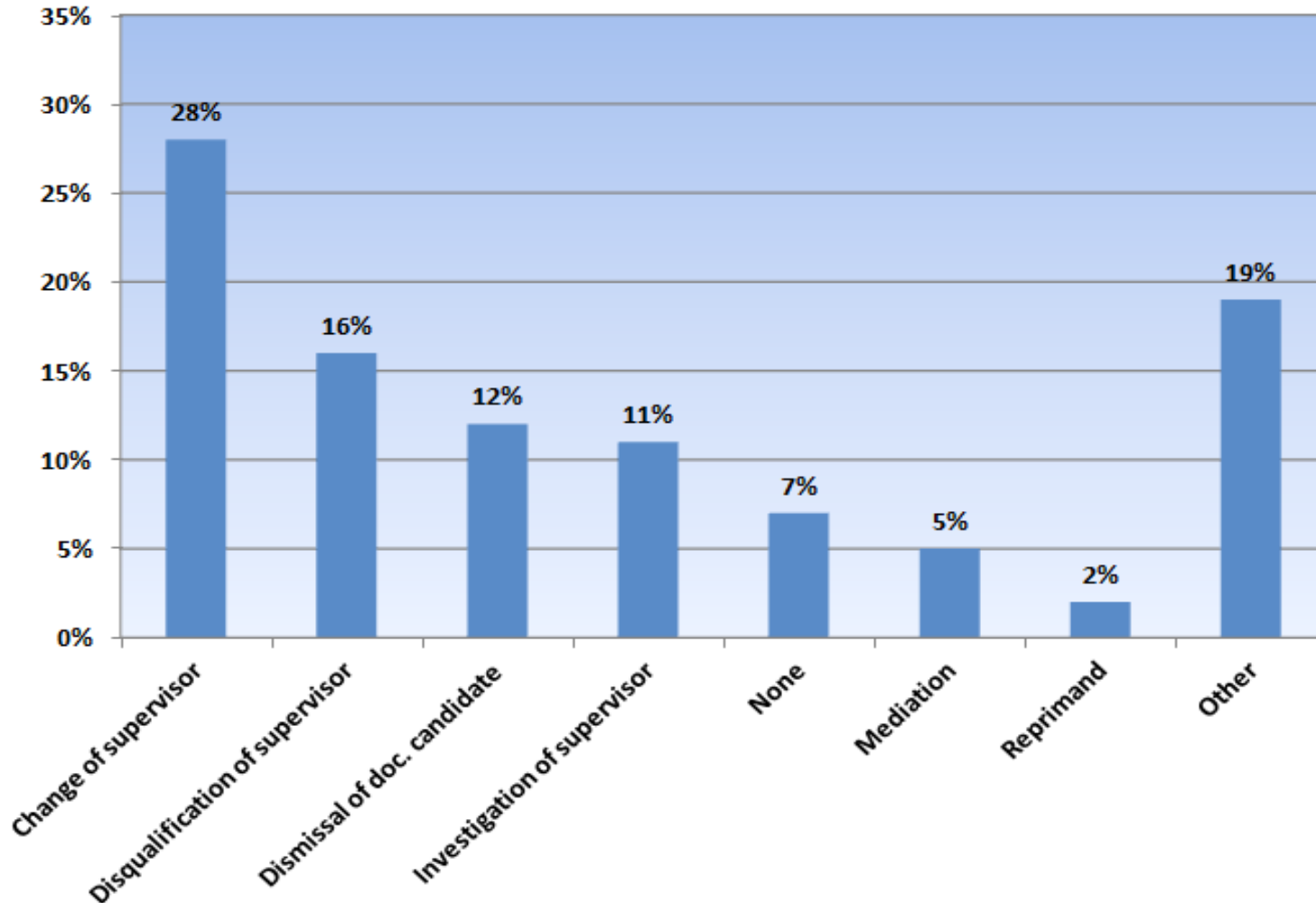
(N=68)

How is the supervision of doctoral candidates systematically monitored in your institution?



(N=68)

What are the consequences of a breach of the regulations relating to supervision of doctoral candidates in your institution?



(N=95)

Conclusion

- Ongoing dissatisfaction with supervision practices in universities
- Eagerness to engage in reform in the area
- Regulations and guidelines often developed but it is unclear how well they are adhered to
- Evidence that some monitoring of supervision practices takes place

Thank you for your attention

<http://forum.eua.be>